



FRANKLIN LAND TRUST  
Annual Report 2009

FROM THE EXECUTIVE DIRECTOR

Fiscal Year 2009 was notable for its significant challenges and opportunities. Not surprisingly, given the economic crisis, the challenges faced by FLT in FY2009 were primarily related to fundraising – the opportunities to our efforts to protect the working and scenic landscapes of western Massachusetts.

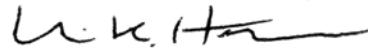
Having just come off a successful challenge grant in FY2008 that allowed FLT to staff-up in order to increase our land protection capacity, the biggest challenge in FY2009 was raising sufficient donations to sustain that increased capacity. Like most nonprofits, FLT has felt the effect of the financial crisis. The number of donors in FY2009 was down from FY2008. There was good news in that the dollars we raised in FY2009 exceeded FY2008. However, donations fell short of our FY2009 budget needs, so we suffered a small deficit for the first time in FLT’s history. As a result of that deficit, FLT’s Board and staff had to make some hard choices when formulating our FY2010 budget, including staff salary and benefit cuts.

In the mean time, opportunities for protecting land continued to grow in FY2009 as we fielded two or three phone calls a week from people seeking FLT’s assistance in developing a strategy to protect their land. As a result, FLT was able to protect another 17 properties, totaling 945 acres, in FY2009. These land protection

successes raised the total number of properties protected by FLT over the last 22 years to 250, totaling 18,009 acres.

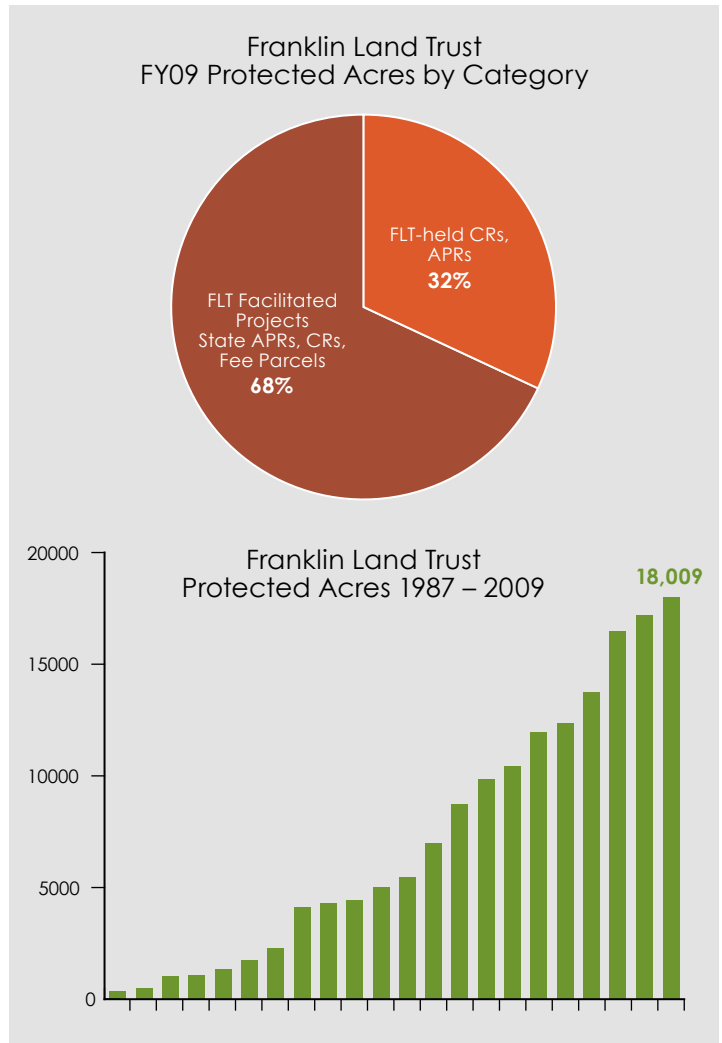
When FLT agreed to accept the challenge of raising funds to match last year’s grant, and thus increase our capacity to protect land, it was after having made a conscious decision to grow to meet the demand for our services, as opposed to having to say no to landowners. We also hoped that our increased capacity would allow us to become more proactive and strategic in our land protection efforts by actively targeting critical agricultural/open space properties for protection. In response to that goal, we have begun work on a Strategic Land Conservation Plan.

No amount of planning, however, can ensure FLT’s success in fulfilling the goal to maintain the economic and environmental viability of the farms and forests, and the scenic, rural character, of western Massachusetts. Our success is directly related to the challenge of raising the funds necessary to support FLT’s staff and day-to-day operations. We, therefore, owe a great deal to the members and other donors listed in this annual report who stepped forward in FY2009 to fund our important work.



Richard K. Hubbard, *Executive Director*

TOWN-BY-TOWN SUMMARY 1987 TO END FY09		
<i>Includes all assisted and FLT held projects</i>		
Town	# of Projects	Acres Protected
Ashfield	37	2376
Bernardston	2	61
Bernardston & Leyden	1	133
Buckland	7	204
Charlemont	10	702
Colrain	17	2212
Conway	18	1586
Deerfield	43	1830
Erving	2	32
Gill	3	338
Greenfield	8	270
Hadley	3	185
Hawley	12	1300
Heath	17	1588
Leverett	3	367
Leyden	10	1123
Monroe	1	48
Montague	6	331
Northfield	3	205
Plainfield	2	540
Rowe	1	15
Shelburne	15	1297
Southampton	1	108
Sunderland	13	267
Wendell	2	77
Westfield	1	27
Whately	12	787
<b>26 Towns</b>	<b>250</b>	<b>18,009</b>



## The Projects

FLT has enjoyed an exciting year, protecting magnificent scenery, critical wildlife habitat and the working farms that produce the food we put on our dinner tables.

Between July 1, 2008 and June 30, 2009 we protected 17 properties totaling nearly 1,000 acres. The properties range in size from nine acres to nearly 200 acres, and each has special characteristics – location, habitat, land use – that makes it important to protect from unwanted development. With each completed project comes the commitment to monitor and steward the land annually, building relationships with landowners and ensuring ecologically sound management practices.

Since 1987, FLT has protected 250 properties, totaling more than 18,000 acres. Here are highlights from our most recent efforts:

### **Winnifred Purrington, Bald Mountain Road** Bernardston, 52 acres

Winnifred wished to see her farm saved from development. Using a loan from The Conservation Fund, the land trust purchased 52 acres of woodlands and fields to protect part of the farm. This land was later sold to the MA Department of Fish & Game with a long term lease to a farmer, who continues to use the open fields. The remaining part of the farm contains several homes and barns and can now be sold to a young farm family.

### **Carol Dyer, Eden Trail** Leyden & Bernardston, 133 acres

Carol gifted a Conservation Restriction on 133 acres of farm and woodland. This farm is a significant property in Bernardston and Leyden in terms of its resource and cultural attributes. The Dyer property will protect about 1,800 feet of frontage along Eden Trail and 2,700 feet of frontage along Eden Trail Branch. This property abuts approximately 500 acres of protected land owned by the MA Department of Fish & Game.

### **Acilio R. Sandri Trusts, Hoe Shop Road** Gill & Bernardston, 167 acres

FLT purchased this large property with support from the Clesson P. Blake and Ruth J. Cook Trust and The Conservation Fund. A Conservation Restriction was sold to the MA Department of Conservation & Recreation, and the land was later gifted to the Town of Gill for a public conservation area. The land contains woodland, wetlands and a diverse beaver pond.

### **Mitch Mieczkowski, South Ferry & Meadow Road** Montague, 110 acres

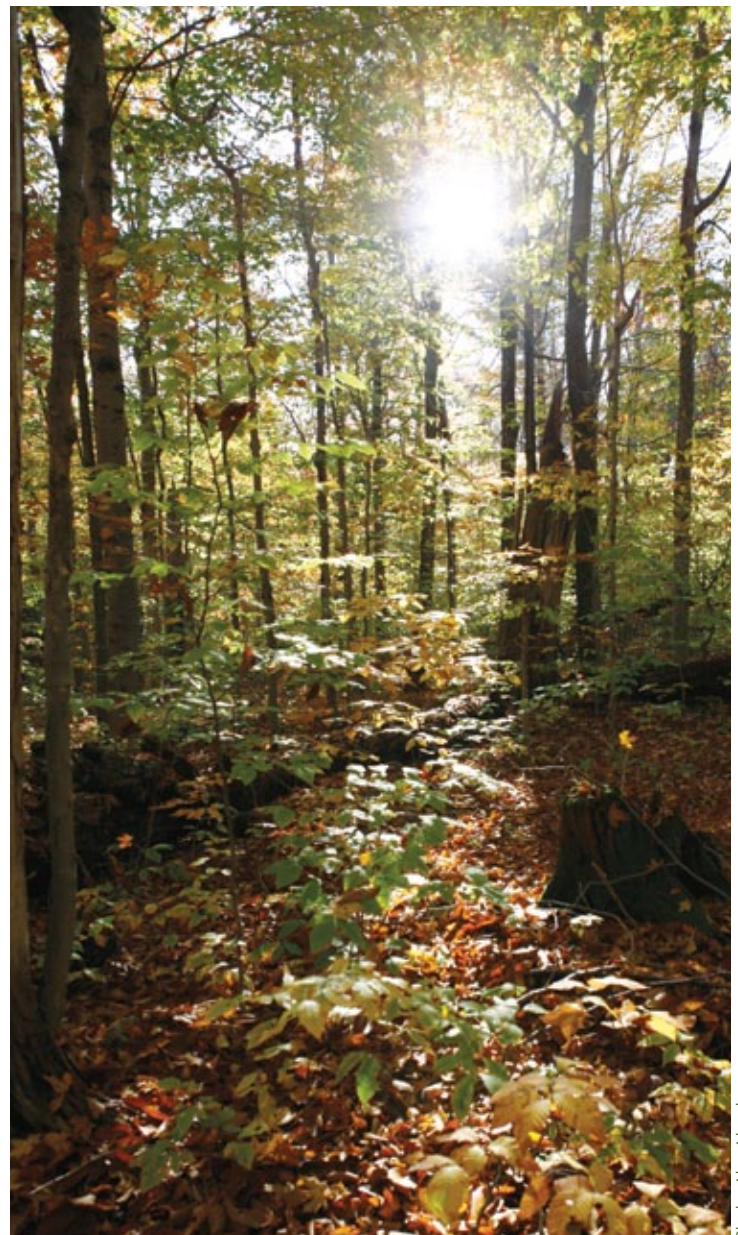
FLT partnered with the MA Department of Agricultural Resources to protect Mitch Mieczkowski's prime farmland, which contains significant frontage along the critically important Connecticut and Saw Mill rivers. Purchase of this APR gave Mitch financial support for their dairy operations and secured another prime valley farm for future agricultural production.

### **Samuel & Marc Dashevsky, Harrison Road** Conway, 24 acres

Brothers Sam and Mark wished to see their land and small cabin protected so their families could enjoy them into the future. The property contains woodland and several acres of open fields and is part of a large conservation block..

### **Lawrence Tower, Tower Road** Charlemont, 100 acres

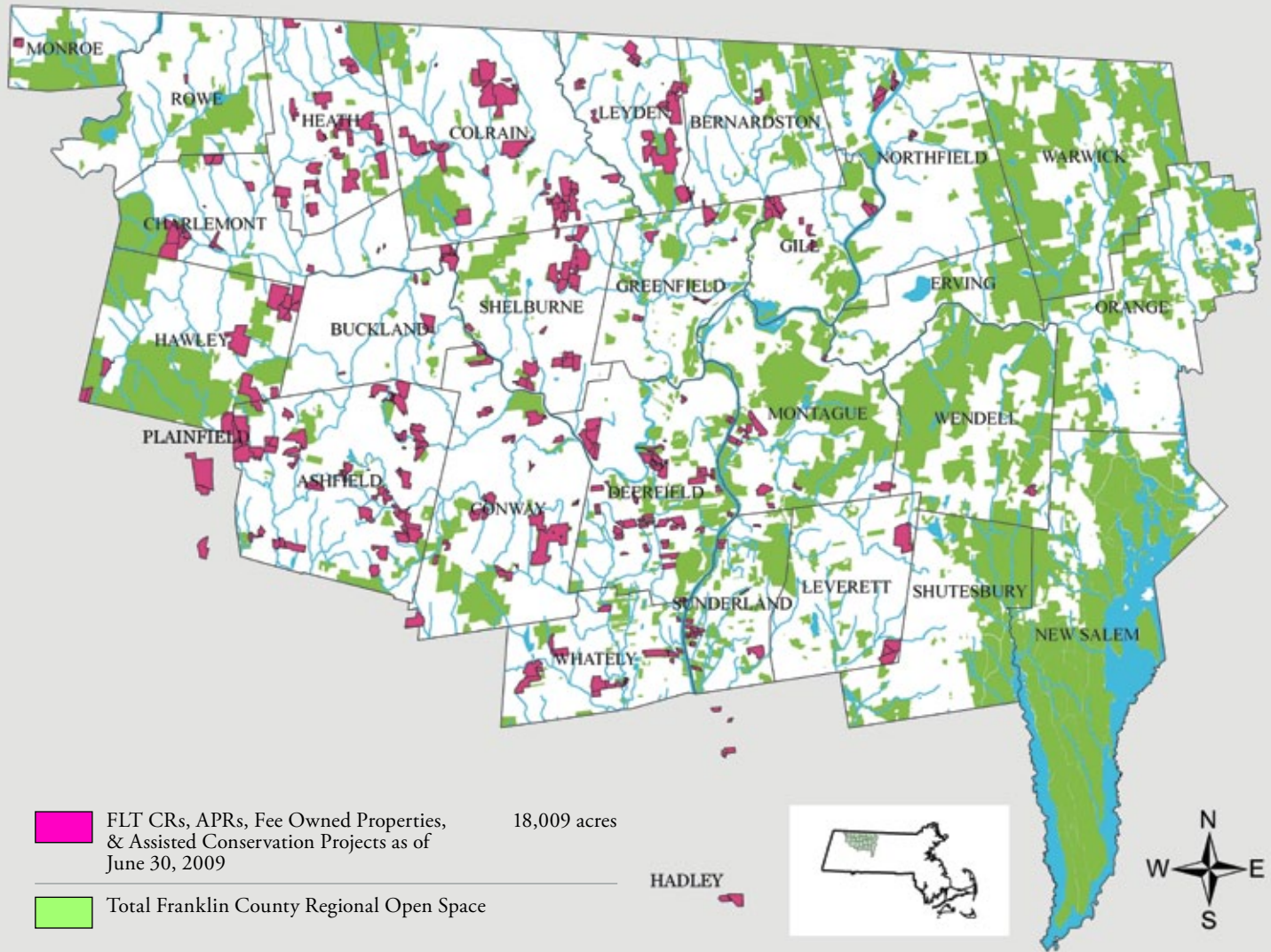
Lawrence worked with the land trust to sell his 100 acres of fields and woodlands for future protection. About 30 acres of agricultural fields have been protected under an Agricultural Preservation Restriction and sold to a local farmer; more than 60 acres of woodland abutting the Mohawk State Forest have been gifted to the state for public recreational uses.



Photos: Alain Pefteroy



### FRANKLIN LAND TRUST REGIONAL MAP



## The Year in Review

This fiscal year has posed financial challenges for most nonprofits, but FLT is lucky to be able to report many successes.

Through June 30 we completed 17 land protection projects throughout the region, for a total of about 1,000 acres. As a community organization, we've enjoyed the satisfaction of protecting some of the region's landmark farms and spectacular properties – including nearly 200 acres of open space in Gill and more than 100 acres of frontage along the Connecticut and Saw Mill rivers in Montague.

Having saved important elements of our landscape is a kind of wealth in itself. However, we've also continued to see consistent support from private donors in the community. It's interesting to note that more than half of the donations we receive are gifts of less than \$100, and together, these contributions comprise nearly half of our annual revenues.

FLT also enjoyed success at our annual events: The art auction, annual Farm and Garden Tour, and Deerfield Dirt Road Randonnee attracted large crowds and lots of enthusiasm for our land protection efforts. They also generated funds for our

operating budget. This year, our operating income was \$661,084; of that, \$83,728 came from events.

In these challenging economic times, FLT continues to put as much of its resources as possible toward working with landowners to protect land and educate the public about the work we do.

With help from generous volunteers, we continue to make improvements at the Guyette Farm in Plainfield, which was gifted to the organization last year. As we build trails, clear overgrown areas and stabilize the barn, we can make sure the public will be able to enjoy this beautiful resource for generations to come.

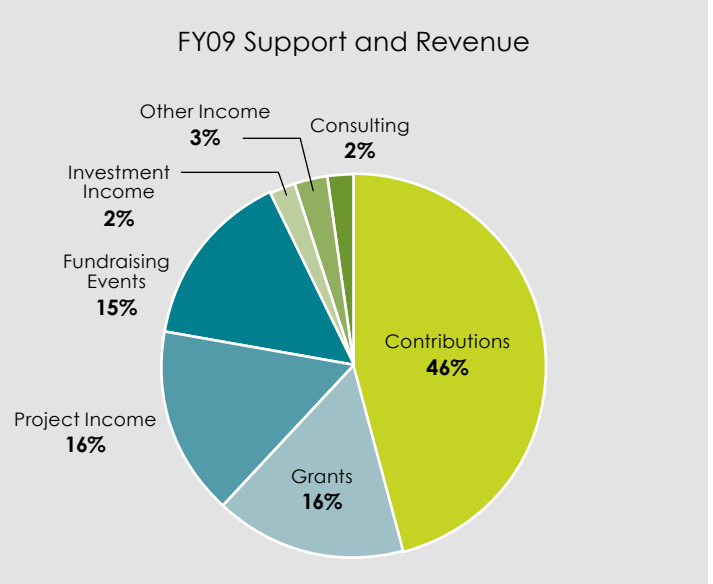
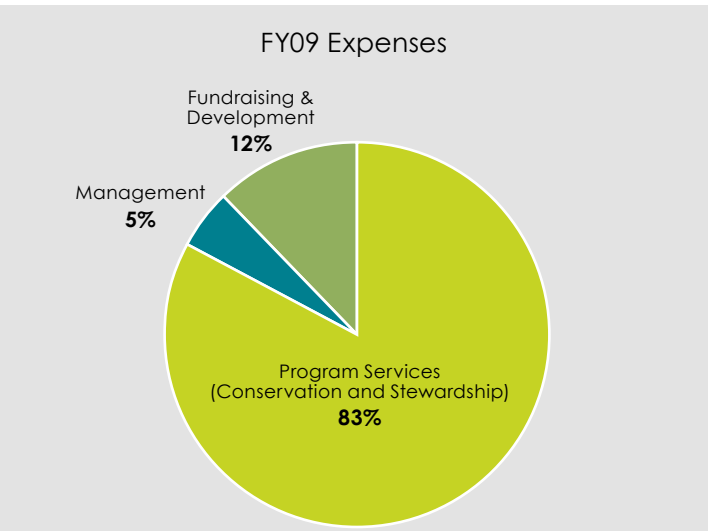
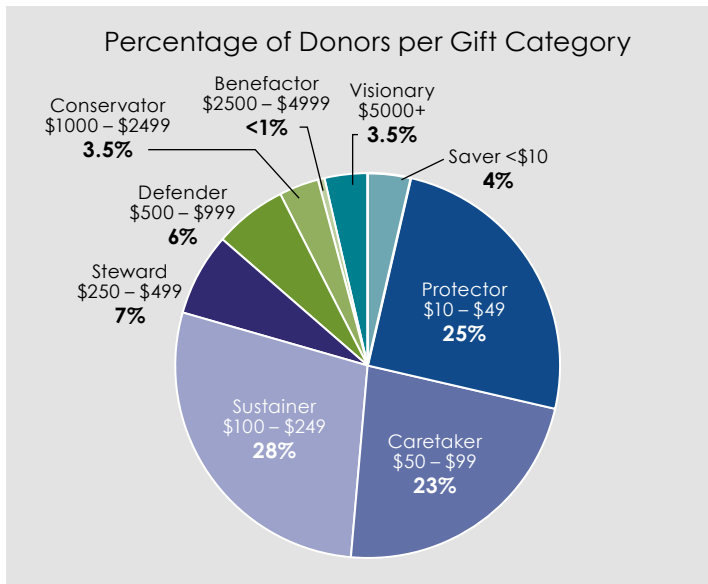
Another continuing priority for FLT is strengthening our ties with local communities and neighborhoods. Through formal townwide meetings and small neighborhood gatherings, we can ensure the organization is responsive to the region's land protection priorities and efforts to provide a sustainable landscape.

With our conservation projects, events and growing base of community support, we continue to build our organization and our ability to protect the region's working farms and scenic beauty.



Photo: Liz Kidder

2009 Farm and Garden Tour



## BOARD OF DIRECTORS

**Charles Cohn**  
*President, Shelburne*

**Tom Luck**  
*Vice President, Leyden*

**Paul Cooper**  
*Treasurer, Hawley*

**Norma Coli**  
*Clerk, Charlemont*

**Donald Clark**  
*Leyden*

**Cris Coffin**  
*Whately*

**Nina Coler**  
*Ashfield*

**Bob Dane**  
*Heath*

**Don Joralemon**  
*Conway*

**Michael McCusker**  
*Buckland*

**Jaap Molenaar**  
*Deerfield*

**Elizabeth Sillin**  
*Sunderland*

**Tim Smith**  
*Shelburne*

**Alan Swedlund**  
*Deerfield*

**Richard Todd**  
*Ashfield*

## STAFF

### FULL TIME

**Rich Hubbard**  
*Executive Director*

**Florence Hebert**  
*Office Manager/Bookkeeper*

**Mary Lynn Sabourin**  
*Director of Development*

**Brandon Vickery**  
*Land Protection Specialist*

### PART TIME

**Linda Alvord**  
*Member Services*

**Will Sloan Anderson**  
*Land Steward*

**Nicole Cusano**  
*Communications Coordinator*

**Liz Kidder**  
*Program Coordinator*

**Alain Peteroy**  
*Director of Land Conservation*

## DEVELOPMENT COMMITTEE

**Jill Ker Conway, Co-Chair**

**Grace Friary, Co-Chair**

**Bruce Brown**

**Donald Clark**

**Nina Anderson Coler**

**Caleb Kissling**



P.O. Box 450  
Shelburne Falls, MA 01370  
413/625-9151 Executive Director  
413/625-9152 Donor Services  
413/625-9153 Fax  
[www.franklinlandtrust.org](http://www.franklinlandtrust.org)

Front/Back cover photo by Ben Barnhart, [www.bbimages.com](http://www.bbimages.com)  
Design by Michelle Sauvé.

♻️ Printed on Rolland Enviro100 Print, an FSC certified, 100% post-consumer fiber, recycled paper.



# Friends

The Franklin Land Trust is grateful for the support of the following individuals and businesses during our fiscal year July 1, 2008 – June 30, 2009. Regular annual support ensures that we can continue to be creative in our responses to development pressure, and the wishes and plans of land owners who seek to protect their property. The Land Trust seeks to maintain the quality of life and the rural character of western Massachusetts. We encourage you to correct any inadvertent errors or omissions by calling Donor Services, 413/625.9151 x108.

## The Legacy Society

### Planned Giving Donors

Charles Cohn  
Jill Ker Conway  
Paul Cooper  
Kathleen McGovern

## Partner Organizations

Ashfield Trails Committee  
The Academy of Charlemont  
The Conservation Fund  
Deerfield Inn\*  
Deerfield Land Protection Advisory Committee  
Deerfield River Watershed Association  
Franklin Regional Council of Governments  
Franklin Solid Waste Management  
Greenfield Farmers Cooperative Exchange\*  
Highland Communities Initiative  
The Kestrel Trust  
MA Department of Agricultural Resources  
MA Department of Conservation & Recreation  
MA Department of Fish & Game  
Massachusetts Highway Department  
Mount Grace Land Conservation Trust  
New England Forestry Foundation  
New England Wildflower Society – Nasami Farm & Sanctuary\*  
North Quabbin Regional Landscape Partnership  
Open Space Institute  
Plainfield Conservation Commission  
Pocumtuck Valley Memorial Association – Memorial Hall Museums\*  
Student Conservation Association  
Town boards of Gill, Leyden, Ashfield, Deerfield, Conway, Bernardston, Heath, Hawley, Montague and Greenfield  
UMASS Cooperative Extension  
Whately Land Preservation\*  
Wildlands & Woodlands Partnership

## Grant Support

Anna Maria and Stephen Kellen Foundation  
Clesson P. Blake and Ruth J. Cook Trust  
Community Foundation of Western Massachusetts  
Narcross Wildlife Foundation, Inc.  
Natural Resources Conservation Service – WHIP Program  
William P. Wharton Trust

## Gifts of Conservation Restrictions

Calvin & Joan Clark  
Mark & Samuel Dashevsky  
Carol Dyer  
Harold Fait  
Alexander Ghiselin & Diane Weltor  
Tom Luck & Liz Kidder  
Michael & Beth Paysnick

## Memorial and Honorary Gifts

### In Memory of Edwin Hubbard

Linda & David Alvord  
Donald Clark Jr. & Ruth Bellows  
Nina & Ron Coler  
Paul & Leslie Cooper  
Nicole Cusano & Richard Andrews  
Florence & Richard Hebert  
Thomas Luck & Elizabeth Kidder  
Jaap & Petra Molenaar  
Alain Peteroy & Herbert Bergquist  
Mary Lynn & Joseph Sabourin  
Elizabeth & William Sillin  
William Sloan-Anderson  
Alan & M.A. Swedlund  
Richard & Susan Todd  
Brandon Vickery

### In Honor of Paul Cooper

Anna Maria and Stephen Kellen Foundation

### In Memory of Lois Garston

Arline Cohn  
Edmund M. Franklin  
James & Patricia Gerou, Jr.

John & Frances Gordon  
Frank W. Haydu, III  
Lathrop Community, Inc.  
Wallis & Cornelia Reid  
Sandra L. Rhodes  
Karl & Pamela Wassamann

### In Memory of Robert Light

Florence & Richard Hebert

### In Memory of Robert Bunker

Robert Koolkin

### In Honor of Evelyn Guyette

Eric & Naomi Myrvagones

### In Memory of Harold Guyette

James & Thelma Pilgrim

### In Memory of Robert August

Judith Perera

### In Honor of Alastair Maitland

Deborah Porter

### In Memory of Bertha Markland

Philip & Lucy Saunders

Dr. Allen Warner

### In Honor of Robin Sherman & Rob Allen

Victor & Susan Temkin

### In Honor of Jill Ker Conway

The Smith College Class of 1983

### In Memory of Joseph Barchenski

Tammy Warger

### In Memory of Joseph W. Gorman

Evan, Matthew & Ashley Sabourin

### In Honor of Ralph & Howard Dickinson

Donald & Judith Wilmeth

### In Memory of Michael Sullivan

Sharon Wusk

## Visionary

\$5,000+

Anonymous (3)  
Calvin & Joan Clark  
Charles Cohn\* & Catherine Smith\*  
Ron Coler\* & Nina Anderson Coler\*  
Jill Ker Conway\*  
Paul\* & Leslie Cooper  
Deerfield Academy\*  
Eaglebrook School\*  
Shepard & Leona Forman  
Richard French  
Gay Hapgood\*  
Historic Deerfield, Inc.\*  
Robert A. Jonas & Margaret M. Bullitt-Jonas  
Kohlberg Foundation  
Lynden & Kristen Lyman  
John & Margaret Payne  
John L. and Amy Wilson Scott  
The Silver Tie Fund, Inc.  
Ledlie Woolsey  
Xeric Foundation

## Benefactors

\$2,500 – \$4,999

Anthony & Catherine Gallo  
Alice & James Hardigg  
Caleb Kissling\*  
Elizabeth\* & William Sillin  
Sandy Whittlesey\*

## Conservators

\$1,000 – \$2,499

Charles P. & Betty Barker  
The Bement School\*  
Kenneth Brownell  
Julie Caswell & Richard Rogers  
Channing L. Bete Co., Inc.  
Donald Clark, Jr.\* & Ruth Bellows\*  
Clarrisa Coffin\* & Roland Kinsman  
Raymond Damato  
Peter Engelman & Kendall Clark  
Carolyn Gray  
IHEG - Calvin Theatre\*  
Tom Luck\* & Liz Kidder  
Tad & Betsy Mayer  
Kathleen McGraw\* & Jaye Pope  
Pioneer Gardens, Inc.\*  
Janine Roberts  
Mary Lou Rup  
Robert Solosko & Jean Krogh  
Spencer & Ruth Timm\*  
Richard\* & Susan Todd  
Steven Warnecke & Rebecca Bounds  
Janet\* & Robert Weissman

Dena Willmore & Martha Thurber

## Defenders

\$500 – \$999

Nancy & Albert Anderson  
Ashfield Stone\*  
Tony & Ann Borton  
Ellen\* & Ronald Catabia  
Janet Chayes & G.W. Murphy  
Chia Collins & Michael Cohen  
Community Health Charities  
Don & Marilyn Conlan  
Peter Corens & Janet Castleman  
Lloyd\* & Suzanne Crawford, Stump Sprouts Ski Ctr.  
Sharon Dunlap Smith & Simeon Smith  
First Pioneer Farm Credit, ACA  
Robert & Carrie Fydenkevez  
Greenfield Savings Bank  
Q Li Holmes\*  
Richard & Julia Hubbard\*  
Elizabeth Hubbard  
Marie Helene Huet  
Dorothy & Richard Hulbert  
Anita Husted  
Hale\* and Lorraine Johnson\*  
Donald Joralemon\* & Phoebe Porter  
David & Cornelia Klimczak  
Maria Kogan  
Tom Kuklinski\*  
Christine Labich  
Shapleigh LaPointe  
Kim Levitch & Nancy Fournier  
Judy Markland & William Saunders  
Wayne A. Meeks & Judith Colton  
Joan Meyer & Thomas Chalmers  
Osco Inc.  
Margaret & John Pinto  
Scott Prior\*  
Faith Rand & Brian Donahue  
David & Bette Richard  
Elizabeth Rock\*  
John Sears  
Andy & Nancy Smith  
The Shelburne Architects  
The Smith College Class of 1983  
Timothy Smith\* - Apex Orchards  
Joseph Peter Spang\*  
Alan\* & M.A. Swedlund  
Olaf & Peggie Thorp  
Robert\* & Linda Underhill\*  
Warner Farm  
Beverly Weeks  
Edwin Wolf\*

## Stewards

\$250 – \$499

Mark\* & Patricia Allen  
William Baczak\*  
Linn Bower\*  
Bank of Western Massachusetts  
Marilyn Beal\* & Al Ladd\*  
Bear Path Farm, Bill Obeare  
Molly Cantor\*  
Charles M. Cohn Financial Services  
Norma\* & William Coli  
O. Stuart Chase  
Tom Chiofalo  
Richard Clarity & Caroline Mack  
Charles & Anne Connington, Jr.  
Walter Cudnohufsky\*  
Abbott Lowell Cummings  
Douglas Peterson and Associates, Inc.  
Eve Endicott  
Cathleen Esleek  
Nathanael Fortune & Joyce Palmer-Fortune  
Deborah Garner\*  
Alexander Ghiselin & Diane Weltor  
Mark Graves  
Greenfield Co-operative Bank  
Jeanne Grover  
Peggy Hart\*  
Richard & Florence Hebert  
Frank & Marilyn Hennion  
Scott Jackson  
Marianne Keating  
John Kinchla – Amherst Nurseries\*  
Daniel G. Leahy  
Kimberly Lindner  
David Markland  
Troy Martin & Cynthia O'Dell-Martin  
L. Herbert Maurer & Letha Mills  
Mike McCusker\* & Polly Anderson  
Tamsen Merrill  
Carl Meyer, II  
Dick\* & Dianne Muller\*  
Ken Noyes\*  
Beverly & Jeffery Parrette  
Michael & Barbara Parry  
Michael & May Pekarski

Geoffrey & Kathryn Precourt  
Roy & Madeline Provost  
Wallis & Cornelia Reid\*  
David Rodgers  
Dolores Root  
Joseph\* & Mary Lynn Sabourin  
Richard & Ilene Sears  
The Shelburne Falls Wine Merchant\*  
Phil\* & JoAnne Sherburne\*  
Josh Simpson & Cady Coleman  
Paula & Richard Spencer  
Stephen\* & Diane Smithers  
Jon & Susan Perkins Stark  
Sunset Hoopsters\*  
Liz Toffey\*  
James Whitbeck\*  
Mark & Marie Zenick  
Laura Zindel\*

## Sustainers

\$100 – \$249

Maryellen & Robert Abbatiello  
Stephen Anderson & Ava Gips  
Ashfield Hardware & Supply  
Nancy August  
Ben Barnhart\*  
Mary Barringer\*  
David & Aina Barten  
Robert & Marie Bartlett  
George J. Basbas  
Bear River Timber Frame  
Nancy Beckley  
Michele & Fred Beckta  
Blackmer Insurance Agency  
Pamela Blalock  
Cynthia & George Boettner  
Boxborough Conservation Trust  
Ed Branson\*  
Wesley H. & Lucinda S. Brown  
Bruce\* & Mary Brown  
Russell and Susan Burns  
James & Joyce Burrill  
Polly Byers & Mae McCoy  
Clifford\* & Susan Carlson  
Andrew Chase & Rachel Blain  
Cresha & George Cianciolo  
Mary Kenley Clark\*  
Michael Coe\*  
Sarah Coe\* & George Critides\*  
Krstyna Colburn  
Coldwell Banker/Upton Massamont  
Bob Compton\*  
Gabriel Amadeus & Elizabeth Cooney  
Doris Cooper & Joel Rose  
Joanna & Scott Creelman  
Robert\* & Jayne Dane\*  
Mimi & Carl Darrow  
Russell Davenport  
Antonin & Paula De Fougerolles  
Judson & Cameron DeCew  
Georgette Defriesse  
Anne Deggendorf  
Sandy Denis\*  
Clifford & Cathy Desch  
Chip & Debby Dewing  
Sally Dillon\*  
Rich DiMatteo\*  
Lynn Di Tullio & Paul Newlin  
Kate & Kenneth Downes  
Greg Doyle & Susan Coan\*  
Beverly Duncan\*  
Anne Eberle  
Richard Evans\*  
Fairview Farms Inc.  
Harold Fait  
James & Margaret Ferry  
Barbara Fingold & Gary Schaefer\*  
Cindy\* & Marcus Fisher\*  
T. Wilson Flanders  
Jan Flaska & Jill Mackay  
Henry Flynt, Jr.  
William & Elizabeth Forbes  
Francis Fortino  
Charles Fox  
Edmund Franklin & Robin Garston  
Franklin  
Jean Franklin  
Adele Franks & Steve Jones  
Polly French\*  
Grace Friary\*  
Alice & David Furer  
Herbert & Constance Futter  
Donna Gaylord  
Caroline Gear & James Olsen  
George Propane  
Carol Gobin\*  
Warren Graham, DMD  
Bob Green\*  
Dianne\* & Eric Grinnell  
Bob & Susan Gruen  
Dr. & Mrs. Thomas Hagamen

Mary Hall  
Edward & Blanche Hallen  
Edward & Kathleen Hammond  
James Hardigg  
Everett & Janice Hatch  
Judy Haupt & Tom McCrumm  
Kathryn Hayes  
Peter Healey & Ticia Kane  
Karinne & Thomas Heise  
Chris & Karen Helbig\*  
Frank & Wanda Henry  
John Herdeg  
Nathaniel & Karen Herold  
Ellen Hilly & Robert Strossi  
Anne & Christopher Hoffman  
Judy Holmes\* & Sandra Gokey  
David Hopkins  
Margaret Howland  
Allen & Ann Irvine  
Jawik Inc.

Monika Johnson  
Peter Kend  
Robert & Sharon Kieras  
Diane Kolakoski  
Neal & Maud Kozodoy  
Amy\* & David Krane\*  
Frederick & Janice Kreitner  
Norman\* & Valerie Lafleur  
Mark Lattanzi\*  
Eric S. Laursen & Mary Dearborn  
Robert & Judith Lawrence  
Ellie Lazarus  
Andrea Leibson\* & Jack Wileden  
Thomas Lewis  
Peter Lindenauer  
Thomas & Maureen Litwin  
Alastair Maitland\* & Hazel Porter\*  
Eugene & Joann Maleski  
Helen Maniatty  
Christopher Maniatty  
Kate Marmoras  
Albert & Denise Mason  
Allen & Glenda Maurer  
Alan McArdle  
Nicola Metcalf  
Scott Milewski  
Ken & Barbara Miller  
Mister Tire  
Robert & Andrea Moorhead  
Mt. Toby Farm  
Jim Murphy\*  
Edwin A. & Caroline Murray  
Timothy Neumann\*  
Virginia Newell-Stokes & Don Stokes  
Shirley Ostendarp  
Edith Overly  
Paul & Joan Pajak  
Ruth Parrnell & Donald Walker, Jr.  
Samuel Payne  
Fred & Susan Pazmino  
Ted & Claire Pease  
Edmund & Carole Penneck  
Judith Perera  
Lynn Perry & Roland Hesselbart\*  
Alain Peteroy & Herbert Bergquist  
Marcia & Frank Peteroy  
Jim & Thelma Pilgrim  
Winton Pitcoff  
John & Nancy Plotkin  
Nancy & David Pond  
Carol Pope  
Earl Pope, Jr. & Mary Kay Hoffman\*  
Linda Propoky  
Betsy Prudden  
Susan & Peter Purdy  
Donald & Katherine Raymond  
Charles & Mary Reaick  
Katherine Robertson & William Sheehan  
Alison Rogers  
Arthur & Janet Rogers  
James Roman  
Abigail Rorer\*  
W. David Rosenmiller & D. Rae Korengold  
Lynn Rubinstein & Joseph Shoenfeld  
Ned & Sharon Rudnitzky



P.O. Box 450  
Shelburne Falls, MA 01370  
413/625-9152  
www.franklinlandtrust.org

Richard Rumeit & Jean Erlbaum  
William Ryan & Jeanne Lightfoot  
Jacqueline DeBoer Salem  
Ken Salem\*  
Robert & Betsy Sand  
Laurie Sanders & Fred Morrison  
Michael & Margaret Sanders  
Sandra Saunders & Peter Williams  
Phillip & Lucy Saunders  
Savage Farms, Inc.\*  
Elizabeth & Robert Schmitt  
Hugh & Bronwyn Schoelzel  
Robin Sherman & Rob Allen  
David & Esther Short  
Wendy Sibbison & Steve Alves  
Norman Sims  
Sandra & Richard Smith  
Andrew Sovjani\*  
Helen Spencer  
John E. Stauffer  
Jerry & Trina Sears Sternstein\*  
Pamela Stobierski  
Tim Storrow  
David Sund\*  
Victor & Susan Temkin  
John Thomas  
Leslie Thomas  
Elizabeth Toffey\*  
Joseph Vesely  
Marie-Francoise Walk  
Owen S. Walker  
Robert & Muriel Walker  
Barbara and John Wallace  
Tommy Warger  
Nicholas & Sue Warner  
Donald & Anne Hunter Wheelock  
Joseph Wicinski & William Benner  
Ronnie Williams & Suzanne Anapolin  
Elizabeth Williams  
Ken Williams  
Donald & Judith Wilmeth  
Edward C. Wykowski  
Sharon Wysk  
William Yenner  
Thomas & Anne Yeomans  
Sharon Young  
Brent Young  
Peter & Ellen Zale  
Carole Zambito  
Genie Zeiger & Bill Ennen

## Caretakers

\$50 - \$99

Michael & Lindsay Abbate  
Mark & Wendy Abramson  
Joan Adler & David Wozniak  
William Allen  
Glenn & Kimberly Ali  
Mark Allman & Amy Wales  
David\* & Linda Alvord  
Michael & Montserrat Archbald  
William Austin & Joan Rockwell  
Maura & Joseph Barbato  
Linda & Alfred Barlen  
David & Polly Bartlett  
Patrick Bensen  
Neil & Jane Berger  
Edward & Julia Berman  
Timothy & Elizabeth Bishop  
Gary & Beryl Blaich  
Olivia & William Blumer  
Jeanne & Richard Bole  
James Bonham\* & Marjorie Macleod  
Marlene Borer  
Regina & Raymond Boron  
Yvonne Boucher  
Ruth Bowman  
David Bray  
Preston & Ann Browning  
Peter & Joyce Buell  
JoEllen Cameron & Justina Golden  
Arleen & Joseph Carbone  
Jane Chang\*  
Richard Cheek  
David Chicoine  
JoAnne & Roger Clapp  
Susan Cohen\*  
Marshall Beekman Coleman  
George Colt & Anne Fadiman  
Abbot & Sarah Cutler  
Robert & Charlene Dalton  
Dianna Dapkins & Melissa Alosso  
Norman & Lisa Davenport  
Corinne Degas & Jack Rosenblum  
Paul & Penny DeGeorges  
Michael Delaney  
Daniel & Barbara Drollette  
Linda Dugas Claudia Benoit  
Wendy\* & Owen Dunphy  
Stephen Eipper & Shari Weldon  
Carolyn & David Engle  
Susan Elena Esquivel\*  
Lois Feldman\*  
Gary\* & Susan Fentin  
Linda Fijol  
Will Flanders  
Jocelyn Forbush\*  
Kevin Ford  
Robert Gaffney & Mary Klippel  
Dr. Ami & Bruce Gantt  
Nancy Garrabrants  
Michael Gentner & Mary Riley  
James & Patricia Gerou

Craig & Julie Sidon Gerry  
Byron Gilchrist  
Steven & Fran Goldsher  
John & Frances Gordon  
Ronald & Pat Graves  
Connie & Bill Harris  
Stuart Harris\*  
Harvest Farm of Whately  
Karen Hauschild  
Davis Hawkowl  
Julie Hawkowl  
Frank Haydu  
Nancy Hazard  
Jay & Elizabeth Healy  
Cynthia Herbert\*  
Janice & Brian Higgins  
Sherrill Hogen  
John Jansen  
Nicholas Jones & Margaret Christie  
Owen Jones  
Rebecca Jones\*  
Bradley & Carol Katz  
Harry Keramidis & Renee Rastorfer  
Thomas & Brenda Kerle  
William & Arleen Kilpatrick  
Steve & Sandy Kinsman  
Lynn Kline\*  
Nina Koch  
Robert Koolkin  
Judith Kundl & Brian Pinette  
Paul Laciniski & Amy Klippenstein  
Daniel Laroché  
Steve Lavoie  
Elisabeth Leele  
Jerry Levine & Julie McCarthy  
Barbara Levy  
Patricia & James Lewis  
Robert Libon & Kristina Mose-Libon  
John and Danielle Lochhead  
Robin Logan\* & Jim Wallace\*  
Robert Lowe  
Ruth & Charles MacNabb  
Thomas Mahar  
Mildred March  
Herb & Mary Marsh  
Micky McKinley & Samuel Green  
Elizabeth McNamara  
Christine & Mark Megliola  
John & Lucy Melnick  
Elizabeth\* & Theodore Merrill  
Sarah Montgomery  
Frances & Whitfield Moretti  
Elinor & Earl Morton  
Eric & Naomi Myrvaagnes  
Howard Nenner & Pamela White  
Northfield Mount Hermon  
Timothy Nourse  
Duanne\* & Anne Nyman\*  
Roger & Janet Osell  
John Passiglia\*  
Shirley Pelletier  
Photography by Ken Kipen  
Margaret Pivonka  
Michael Pollitt & Donna Cacace  
Deborah Porter & John Henry  
Robert Reed  
Peter Richardson  
Richardson's Candy Kitchen  
Don & Molly Robinson  
Nora Roche  
Janet Crowley Rose  
Jim & Martha Ross  
Paul Roy  
Michelle Sauve\* & Nancy Ruscio\*  
Stephen Schreiber  
Robert & Deborah Shriver  
Marianne Simon & Tom Leamon  
John & Wendy Sinton  
Donald Sluter  
Dorothy Smith  
F. Sydney & Rosamond Smithers  
Bruce Spencer & Judith Northrup-Bennett  
Ed & Emma Stamas  
Marcia Starkey  
David & Julie Starr  
Peter Stevens  
Linda & Jack Tannenbaum  
Joel & Jennifer Thomas-Adams  
Elizabeth Tonne  
John & Deborah Torchia  
Jeffrey Traft, D.D.S.  
Jean\* & Wayne Turner  
Vivian Unterweger  
Conrad Valleski  
Joan C. VanderVliet  
Patricia Vinchesi & Daniel Fitzgibbons  
Michael & Katherine Walsh  
Michael\* & Sherry Walsh\*  
Allen Warner  
Richard Warner\*  
Karl & Pamela Wassamann  
Dr. & Mrs. Willard T. Weeks  
Peter Westover\*  
John & Carolyn Wheeler  
Laura Wildman-Hanlon  
John & Mary Williamson  
Seth & Elizabeth Worcester  
Hedley Yost & Gordon Dean  
George Zdru

## Protectors/Savers

<\$50

Skylar Abbatiello\*

Allotta Hoopla - Shenandoah Sluter\*  
Christopher Abel & Mary Dingman-Abel  
Gary & Nancy Alan  
Caleb Alvord\*  
David Arfa & E. Kim Ersvle  
Artspace\*  
Carolyn Asbury\*  
Ted & Jane Ashford  
Andrew Baker  
Nancy Baker\*  
Robert & Virginia Baker  
Barbara Banik  
Bart's Homemade\*  
Howard & Lisa Beaudry  
Susan & Robert Bellemare, Jr.  
Berkshire Brewing Company\*  
Theresa Billiel  
Natalie Blake\*  
Ann Brauer\*  
Jay Brumberg\*  
Judd & Beatrice Blain  
Gail & Daniel Blanchard  
George & Cynthia Bluh  
Carol Bolduc\*  
Teresa Bragg  
Jeanne Breeden\*  
Michelle & R.J. Brynda  
William & Nancy Buchanan  
Fred Burrington\*  
Glen, Colleen, Celia & Emily Caffery  
Helen Kittredge  
Priscilla Caouette\*  
Daniel & Susan Carmody  
David Blaine Champoux & Amy Ruth  
Winters  
Stacy\* & Paul Chapley\* - Chapley  
Gardens  
Caleb Chapley\*  
Gabe Chapley\*  
Joshua Chapley\*  
Zach Chapley\*  
Bill Chidsey\*  
Janet Clark\* & Nort Salz  
Wifred Clough  
Kevin Clune  
Arline Cohn  
Tim Coleman\*  
Rebecca & Dario Coletta  
Barbara Conn  
Bonita\* & Dan Conlan\* - Warm Color  
Apiaries  
Kerlin Conyngham & Doug Telling  
Lisa Cormier  
Marie Claire Courmand  
Jon Crawford-Sieben & Emily Gopen  
Grace Crowningshield  
Ken Cuddeback\*  
William\* & Judith Cummings\*  
Wendy S. Curtis  
Nicole Cusano  
Tanya Cushman  
Charles Cutler\*  
Sarah Darling  
Harriet Davidson  
Nathan Deschaine\*  
Brian DeVriese\*  
Robert G. & Jean L. Dewey  
Daniel & Kathleen Dewey  
Andrea Donlon  
Buddy Downey\* & Spencil Hill  
John M & Carol E Dugan  
Max & Joan Eckstein\*  
Henry & Margaret Eggert  
Lynne Esworthy  
Chris Farley & Juliet Jacobson  
Lila Feingold  
Anna Fessenden\*  
First Church of Deerfield\*  
H. John & Sebern F Fisher  
David Fisher\* & Anna Maclay - Natural  
Roots  
Larry Flaccus\*  
Norm Flye\*  
Flye Cycles  
Peter Flynn\* - Baystate Perennials  
John Foster\*  
Allen Fowler  
Carolyn Fox  
David Freeman & Christine O'Brien  
Margaret Freeman\*  
Nancy Fritz  
Terry Gaberson  
Gaelic Storm\*  
Kristin & Brett Gewanter  
Theodore & Norma Gewanter  
GoIn Gray Auto  
Jack Golden\*  
Bruce Goldstein  
Laurie Goddard\*  
GoNomad Café\*  
Norm & Gail Gordon\*  
Mary Lou Green  
Green River Village Preservation Trust\*  
Pauline & Warren Grinnan  
Marion Griswold  
Carol Gritz  
Benjamin Gundersheimer  
Stephen & Lynne Hale  
Tom Hale\*  
Paul Hartshorne  
Ruth Herzig & Sandra Bosselman  
Linda Hill\*  
Dorothy Hmieleski

Flournoy Holland  
Richard & Joanne Howes  
James & Hemsley Hughes  
Alicia Hunsicker\*  
David Jackson - Enterprise Farm\*  
Cherie & Jafar Jafar  
Rita Jaros\*  
Ted & Bari Jarrett  
MaryEllen Jepson\*  
Ed & Carol Johnson  
Emily Johnson\*  
Kathleen\* & David Johnson\*  
Sarah K. Johnson\*  
Liz Johnson\*  
Arnold Jones\*  
Hope Jones  
Ann Judson\*  
Elaine Kachavos  
Leon Kadis  
Edward & Sharon Kane  
Dell Katz\*  
Marc & Ellen Kaufmann  
Denise & Michael Kellen  
Kathleen B. Kerivan  
James Kessler & Sara Cohen  
Dusty King\*  
Jeffrey Kingsbury  
Peter Kitchell\*  
Jim Kitchen\*  
Dave & Anne Marie Kittredge  
Helen Kittredge  
Walter Korzec & Fran Henry  
Ann Marie\* & Paul Kostecki\*  
Carl Krogh  
Steven & Eileen Krol  
Stephen Kulik & Suzanne Thaxter Kulik  
David Kulp  
Lawrence Kuttner  
Catherine Lafleur  
Carla LaGrassa  
William Scott Laidlaw & Caroline  
Bill Chidsey\*  
Cuthbert  
Stanley Lakota, Jr.  
Sandra & David Lamb  
Peter & Hollace Lankowski  
Lathrop Community, Inc.  
Sally Laubin-Jones  
Peter Laurent  
Kyllin Lee  
Terry Lee\*  
Conrad Liebenow\* & Elaine Holder\*  
Merry Lein\*  
Christopher Lenaerts\*  
David & Amy Liebowitz  
Alan & Edith Lipp  
Peter London\*  
Luann & Robert Lord  
Marie Lovley\*  
Christopher Lowe\*  
Jennifer Luck\*  
Robin Luck\*  
Suzanne Mahoney  
Chuck Malugen  
Joseph Mattei\*  
Francis M. Maynard  
Nancy & Gary Maynard  
Jason Mazzone  
Gerry McCarthy\*  
Thomas J & Susan McCarthy\*  
Leighton & Martha McCutchen  
Brenda & Gerard McGovern  
Caitlin McKee\*  
Jeremiah & Deborah McQuillan  
Moira Megargee\*  
Beth & Peter Melnik - Bar-Way Farm\*  
Malcolm Meltzer  
Robert & Belden Merims  
Mary Merriam\*  
Tom Mershon\*  
Joseph & Judith Misterka  
William & Barbara Mitnik  
Mo's Fudge Factor - Michelle Olanysk\*  
Jaap Molenaar\*  
Simon Molenaar\*  
Willem Molenaar\*  
Wanda Mooney  
Dale Moore\*  
Barbara Morrell & John Clement  
Barry Moser\*  
Dan Moulton\*  
Barry & Ellen Nigrosh  
Amanda Nims  
Anne\* & Duane Nyman\*  
Pamela\* & Gordon Oakes\*  
Deborah Oekey  
Martha & Albert Olmstead  
Andrew Olson\*  
Maureen O'Malley  
Kathleen O'Rourke\*  
Ric Ormond\*  
Joanne O'Shea  
Jennifer Paris  
Pam Parker\*  
Ellen Patrick\*  
Joan Peters\*  
Jane Peirce & Richard Lariviere  
Shirley & Stephen Pielock  
Martha Pinkham & Diane Miller  
Plants for Pleasure\*  
Hertha Platzer  
Phil Pless\*  
Eleanor & Karen Podlesney  
Raymond & Melanie Poudrier

Ed Priesler\*  
Sylvia Procopio  
Gloria Jean Purinton  
Elizabeth Purnell  
Linda Putnam & John Cohen  
Caroline Raisler  
Dean Rankin  
Stuart Remensnyder  
George Reynolds & Nancy Sherman\*  
Roberge Associates  
Margaret & Joseph Robichaud  
David Rohrs  
Peter Rosnick & Sandra Sobek  
Robert & Susan Ross  
Margaret Rossiter\*  
Roy A. Rudolph & Janice M. Wright  
Ellen Ruitan  
Robert & Dianne Ryan  
Ashley Sabourin\*  
Evan Sabourin\*  
Matthew Sabourin\*  
Paul & Sally Sampley  
David and Pam Sand  
Shelburne Buckland Community Center\*  
Marshall & Janice Schell  
Barbara Schneider  
Elizabeth Whyte Schulze\*  
Nanci Schwartz  
Art Schwenger & Carol Sartz  
Garth Shaneyfelt  
David Shapero & William P. Stoneman  
Mark Shapiro\*  
Larry & Carol Sheehan  
Steven Shulda  
Michael & JoEllen Silipo  
Margaret Sloan & Eric Nelson  
Will Sloan-Anderson  
Charles & Arlene Smead  
Kathy Smith\*  
Robert Smith  
Alexandra Snook\* & Edward Way\*  
Barbara Snook  
Francis Sobieski  
Gary & Janice Spooner  
Ed & Emma Stamas  
David & Julie Starr  
Lauren Stevens  
Jay Stryker  
Risa Sudolsky  
Eric & Mary Sumner  
Vickey Sulton\*  
Stephen Taft  
Penelope Tarasuk  
Sam Taylor\*  
Michael & Pamela Tepedino  
Linda Theriault  
Bert Thurber  
Rebecca A. Tippens  
Ted & Martha Tirk  
Edward H. Toole  
Waino Tuominen  
Brandon Vickery  
Arjen Vriend\*  
Steve Walk\*  
Pamela Walker  
Bryce Walker  
Joie Watson  
Joan Wattman\* & Eric Burcoff\*  
Elsa Weber\*  
Portia Weiskel  
Laura Weitzler\*  
Mark & Kathy Whelihan\*  
Cindy White  
Kent A. & Jean H. Whitney  
Alex Wileiden\*  
Chip Williams\*  
Joan Wilson  
Brayton & Mary Alice Wilson  
Bruce & Jane Winn  
Kyle Wolfgram\*  
John & Ann Wood  
Emily Yazwinski\*  
Jamie Young\*  
Meredith Young  
Michael Zabre & Ruth Anderson  
Nora Zinan  
Maureen McDermott Ziskowski\* & the  
McDermott Academy of Irish Dance  
dancers\*

**\* Volunteers and In-Kind Donors**  
We are sincerely grateful for the support of our volunteers and in-kind donors, both individuals and businesses, who made it possible for our Franklin Land Trust events to be successful (and so much fun!) over the past year. Thank you!



P.O. Box 450  
Shelburne Falls, MA 01370  
413/625-9152  
www.franklinlandtrust.org